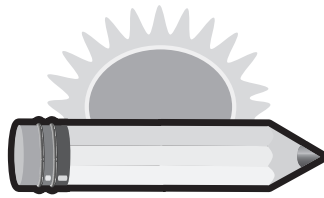


# Table of Contents

<b>Introduction</b> . . . . .	4	Division	. . . . . 42, 45, 48, 49, 51, 53, 54, 56, 57, 59, 64, 65, 68, 69, 71, 72
<b>Tracking Sheet</b> . . . . .	6	Estimation	. . . . . 42, 44, 49, 58, 68
<b>Numbers and Numeration</b> . . . . .	7	Factors	. . . . . 69
Addition . . . . .	12, 17, 19, 22, 23, 36, 37	Fractions	. . . . . 45
Comparing Numbers . . . . .	9, 11, 12, 14, 21–23, 27, 28, 30, 31, 36	Mixed Computation . . . . .	44–46, 52, 56–58, 60–63, 69
Counting . . . . .	9, 24, 26, 29, 30, 38	Money . . . . .	44, 55, 57, 60, 61, 63
Decimals . . . . .	18	Multiplication . . . . .	43–48, 50–53, 55, 58–60, 64, 67, 68, 70–72
Estimation . . . . .	25	Ratios . . . . .	59
Fractions . . . . .	8, 10–12, 14–16, 19, 21–25, 27, 29–33, 35, 37	Rounding . . . . .	54, 58
Identifying Numbers . . . . .	14, 17, 18, 23, 26, 29–31, 37	Subtraction . . . . .	43, 46–49, 51, 53, 54, 60–63, 65, 66, 69–72
Money . . . . .	9, 11, 35	Writing Word Problems . . . . .	52, 55
Number Lines . . . . .	10, 17, 18, 24, 27	Answer Key . . . . .	73–74
Number Order . . . . .	10, 12, 16, 20, 27, 33, 38	<b>Measurement and Geometry</b> . . . . .	75
Place Value . . . . .	8–10, 13, 15, 18, 20, 21, 24–26, 28, 30, 33–38	Alike/Different Shapes . . . . .	88, 93
Rounding . . . . .	36	Angles . . . . .	95
Subtraction . . . . .	13	Area . . . . .	76, 80, 87, 98, 105
Tally Marks . . . . .	8	Calendar . . . . .	85, 86, 88, 103, 104
Writing Numbers . . . . .	11, 14–16, 18–22, 29, 32, 34	Congruent Figures . . . . .	79, 81, 82, 84, 89, 95, 97, 98, 101, 106
Answer Key . . . . .	39–40	Identifying Shapes . . . . .	76–82, 85, 86, 92–94, 96, 99, 101, 104, 106
<b>Operations</b> . . . . .	41	Lines of Symmetry . . . . .	80, 84, 90, 91, 100
Addition . . . . .	42, 43, 46, 47, 50, 53, 55, 56, 58, 61–64, 66, 69, 72	Liquid Conversions . . . . .	78, 92, 106
Arrays . . . . .	64, 65, 67, 70	Measurement (cm) . . . . .	76, 87, 91, 102
Charts . . . . .	65	Measurement (in.) . . . . .	83, 96, 97



# Table of Contents

Measurement Conversions . . . . .	92, 100, 104	Reading Tables . . . . .	115, 128, 130, 137–140
Number Lines . . . . .	76, 88, 94, 95	Answer Key . . . . .	141–142
Parallel/Perpendicular Lines . . . . .	85, 89, 93	<b>Algebra, Patterns and Functions.</b> . . . . .	143
Parts of Shapes . . . . .	78, 84, 94, 95, 97, 102, 104	Arrays . . . . .	146, 148, 161, 171
Perimeter . . . . .	77, 83, 86, 100, 103	Basic Algebra . . . . .	149–154, 156, 157, 161, 162, 164, 166, 168, 169, 172, 173
Slides . . . . .	92	Brain Teasers . . . . .	152, 167
Temperature . . . . .	81, 91, 96, 98	Completing Tables . . . . .	144–146, 149, 152, 155–163, 166, 169, 170, 172, 173
Time . . . . .	79, 83, 89–91, 93, 99, 100, 102, 106	Counting in Groups . . . . .	144, 147, 148, 155, 158, 162, 164
Units of Measurement . . . . .	77, 81, 83, 84, 86, 87, 90, 94, 96–99, 101–103, 105	Drawing Patterns . . . . .	150, 152, 163
Answer Key . . . . .	107–108	Fact Families . . . . .	145, 147, 148, 158, 159, 161, 164, 165, 167, 168, 170, 174
<b>Graphs, Data and Probability</b> . . . . .	109	Interpreting Patterns . . . . .	167, 174
Calculating Probability . . . . .	114, 115, 118, 123, 129–131	Interpreting Tables . . . . .	145, 149, 151–154, 159, 160, 163–165, 167, 169–171, 173
Drawing Bar Graphs . . . . .	112, 116–118, 123, 131	Number Patterns . . . . .	144, 146, 150, 151, 154, 155, 157, 160, 162, 163, 166, 168, 169, 171–174
Interpreting Data . . . . .	129, 134, 135, 139	Shape/Picture Patterns . . . . .	146, 147, 149, 152, 153, 156, 157, 165, 168, 169, 172, 173
Probability with Spinners . . . . .	111–114, 116, 117, 120, 123, 126, 127, 130, 133, 134, 136, 138, 139	T-Charts . . . . .	147, 158
Probability with Tables . . . . .	110, 112, 122, 123, 130, 131, 136	Word Problems with Patterns . . . . .	144, 150–151, 166
Probability with Word Problems . . . . .	110, 111, 113, 114, 116, 117, 119–121, 125–127, 132, 133, 135–137, 139	Answer Key . . . . .	175–176
Reading Bar Graphs . . . . .	110, 113–119, 121, 122, 125–129, 132–136, 138		
Reading Circle/Pie Graphs . . . . .	118, 119, 132		
Reading Picture Graphs . . . . .	111, 113, 119, 120, 127, 133, 135–138, 140		



**DAILY**

Name \_\_\_\_\_ Date \_\_\_\_\_

Warm-Up 43

1. Jane had 3 quarters, 2 dimes, and 4 pennies. She spent 30 cents. How much money does Jane have left?

Explain: \_\_\_\_\_

\_\_\_\_\_

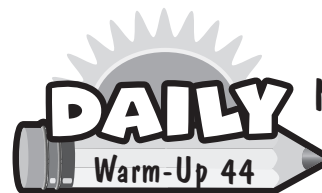
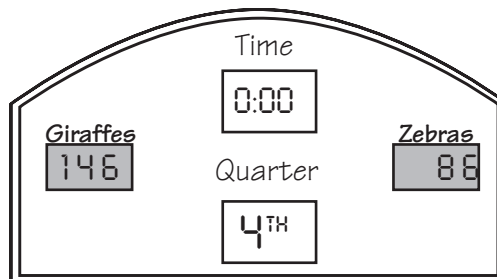
\_\_\_\_\_ cents

\_\_\_\_\_

2. Last Friday night, the Giraffes and the Zebras had their championship basketball game. Based on the scoreboard, who won the game and how many points did they win by?

The \_\_\_\_\_ won by

\_\_\_\_\_ points.



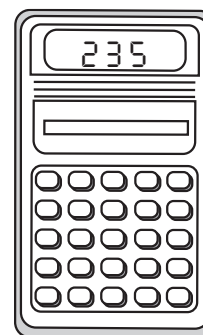
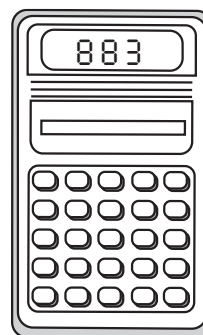
**DAILY**

Name \_\_\_\_\_ Date \_\_\_\_\_

Warm-Up 44

1. One calculator reads the number 883. The other reads 235. What is the difference between the two numbers? (Show your work and write your final answer on the line.)

\_\_\_\_\_



2. Solve the problems below.

A.  $85 + 17 =$  \_\_\_\_\_

B. 
$$\begin{array}{r} 76 \\ + 35 \\ \hline \end{array}$$

c. 
$$\begin{array}{r} 92 \\ - 23 \\ \hline \end{array}$$



Name \_\_\_\_\_ Date \_\_\_\_\_

1. Mr. Privitt loves reading. His books are all on a shelf in his living room. If he takes a book off the shelf without looking, which type of book will it most likely be? (Circle the correct letter.)

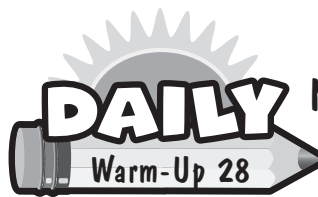
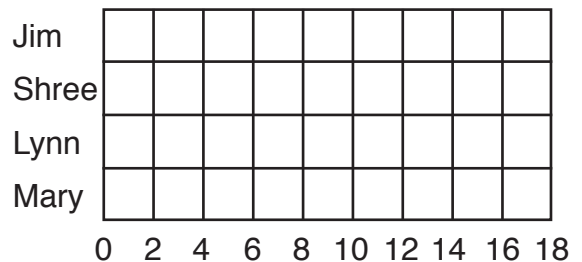
- A. mystery
- B. adventure
- C. romance
- D. history

Type	mystery	adventure	romance	history
Number	6	7	2	4

2. Complete the graph using the information below.  
(Use your pencil to shade in the squares.)

Jim:    ~~||||~~ ~~||||~~ ||  
 Shree: ~~||||~~ ~~||||~~ ~~||||~~ |  
 Lynn:  ~~||||~~ ~~||||~~ ||  
 Mary:  ~~||||~~ ||||

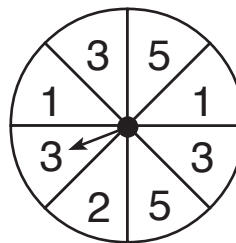
Votes for Class President



Name \_\_\_\_\_ Date \_\_\_\_\_

1. Maria is playing a number game with her brother. If Maria spins the spinner, which number will it least likely land on? (Circle the correct letter.)

- A. 1
- B. 2
- C. 3
- D. 5



2. The table shows the number of colored cubes Darrel has in a box. If he reaches in the box without looking, which answer shows the probability of selecting a blue cube? (Circle the correct letter.)

Color of Cubes	green	gold	white	blue
Number of Cubes	2	1	4	5

- A.  $\frac{1}{12}$
- B.  $\frac{2}{12}$
- C.  $\frac{4}{12}$
- D.  $\frac{5}{12}$